



Kotuku 4 Air Frame Tent

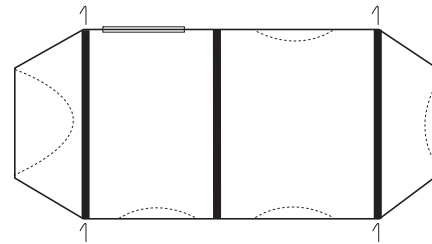
Model No. KC070-605

PITCHING INSTRUCTIONS

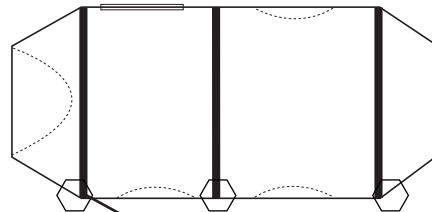
Your tent includes:

- 36 x steel pegs
- 12 x storm webbing ropes
- 4 x ropes
- 1 hand pump
- 2 x steel PORCH poles (1900mm x 16mm)

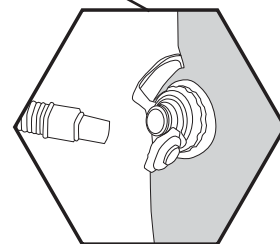
1. Select a dry, level site and clear the ground of any sharp objects. Remove the tent, pegs and pump from the carry bag. Untie fabric ties and unroll tent.



2. Spread out the tent and peg out the four main corners ensuring the tent is pulled taut and square. Pitch the inner so it is in line with wind, never side on.

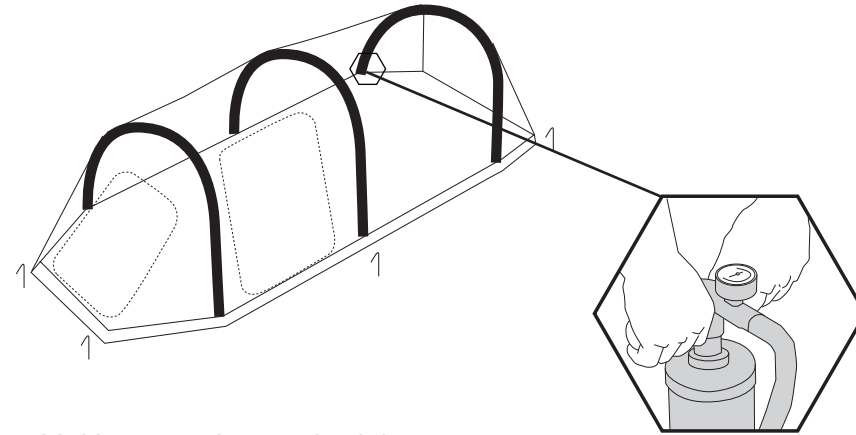


3. Unzip the front and side door to make erecting the tent easier. Looking at the tent from the front unzip the mesh panels that are underneath the ventilation ports on the right hand side - this will give you access to the air tube valves.



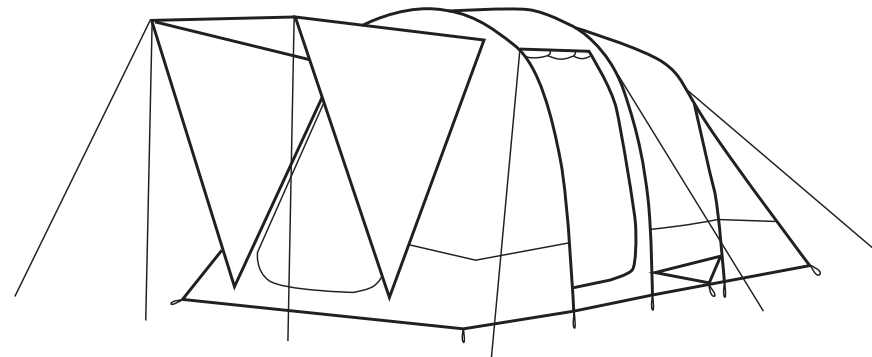
4. Screw the valve into the air tube and then unscrew the valve cap that is on the top. Insert the pump hose into the valve and inflate.

You may need to help the tube stand up so it inflates evenly. Inflate the middle tube first then move to the front and then the back. Make sure you only inflate to the recommended pressure (6-8psi) as over inflation can lead to tube damage. Only use the pump provided as it has a pressure gauge which shows the recommended pressure.



5. Making sure the tent is sitting evenly, peg out the remaining pegging points on the floor and ventilation ports.

6. Finally, rope out the storm ropes and fine tune the tent so it remains taut and positioned correctly.



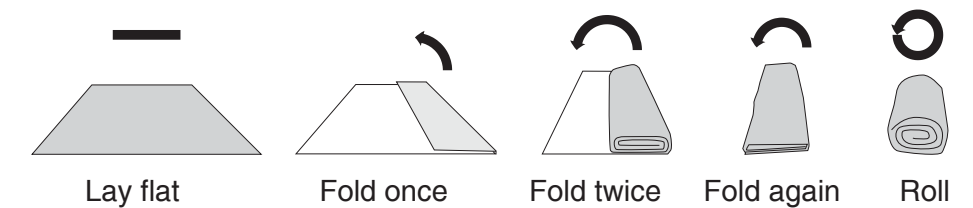
- When pegging out the steel PORCH poles, make sure the ropes are at a 45° angle to pull even tension on the flap. In light rain you can remove the middle section to allow any water build up to run off. In heavy rain you may have to pull the flap down to keep your tent dry.
- Please read the care instructions for more product information about your tent.

REVERSE THE PROCEDURE TO LOWER THE TENT

PACKING INSTRUCTIONS

Take down the porch poles, unzip any doors & windows and then pull out the pegs leaving the 4 corner pegs in.

Unscrew the valve caps letting out all the air - make sure all the air escapes, the doors are unzipped and then lay the roof evenly on the floor as flat as you can as this will make the tent easier to fold.



TENT CARE INSTRUCTIONS

PLEASE READ ALL OF THE TENT CARE INFORMATION AND INSTRUCTIONS INCLUDED WITH THIS TENT BEFORE USING YOUR TENT FOR THE FIRST TIME.

1. Before you use your new tent, fully unpack and pitch it at home. It is important to familiarise yourself with the set up procedure and the various features.
2. Select a site that is level, clear of any sharp objects, is dry, will drain well if it rains and is protected from wind and other elements.
3. Keep clear of overhead power lines and trees when setting up your tent.
4. For best and easiest results, enlist the help of at least one other person to assist in pitching the tent.
5. Keep all flame and heat sources away from this tent fabric. Do not use open flame or gas appliances in or near your tent.
6. Do not use aerosol sprays or any solvent based products in or around your tent as these could damage the fabric or special coatings. These products include but are not limited to: repellent spray, hair sprays, alcohol, detergents, fly spray, petrol, kerosene etc.
7. Please note, the warranty on this tent will be deemed void if the product is used for any purpose other than a **temporary, recreational** use shelter.
8. DO NOT leave tent pitched for weeks at a time as extended exposure to the sun's ultraviolet rays can damage and/or cause it to discolour. Your tent will not be covered under warranty if you leave it up for many weeks at a time. To avoid the risk of UV deterioration, site the tent in a shaded area, where it will be protected from exposure to strong sunlight.
9. Especially in windy conditions, it is essential that you attach guy ropes and fasten them to the ground. We suggest you insert the pegs into the ground at a 45° angle towards the tent, not straight down. Please note, your tent will not be covered under warranty if wind damage occurs.

10. Hold the flaps up, when closing the doors, to take pressure off the zips. Ensure that the tent fabric is never over stretched, especially as this may cause problems with the internal doors.
11. To clean your tent, only ever use a soft sponge and warm water. DO NOT use excess force or other harsh cleaners to remove marks from tent.
12. Ensure the tent is completely dry and clean before storing away and ensure to store it in a dry environment.
13. Please note that the valves used on this product rely on a good air seal which can fail and become ineffective if left under compression whilst in storage. To reduce the chance of valve malfunction, the valves should be fully unscrewed when the product is in storage. Replacement valves are available from your stockist.
14. Please note, that the inflatable bladders are not repairable. Spare inflatable bladders, with full instructions, are available to purchase from your stockist.
15. Changing atmospheric conditions can make the air tubes appear to lose or in some cases gain pressure. Commonly caused by rising or lowering in ambient temperature. Should this occur, the tube will simply require either a topup or release of excess pressure. It should NOT be considered a sign of leakage or puncture. However, where leakage is suspected, you should firstly inspect the valve to ensure that no parts are cross-threaded and that the air seals are in good condition and tight. Removing a valve then re-fitting and re-inflating may help. If you discover that a valve has become faulty or a bladder has developed a leak, spares are available to purchase from your stockist.

IMPORTANT:

1. Under certain conditions (cold weather, high humidity etc.) condensation may form on the inside of your tent fly. Condensation can occur for many reasons including vapour from your breath, perspiration, cooking nearby or wet clothing inside your tent. This does NOT mean your tent is leaking through the fabric. You can minimise condensation by opening windows and airing out your tent during the day and by removing any wet clothing/towels etc. Note that damage caused by condensation, is NOT covered by the manufacturer's warranty.

2. Try to avoid pitching your tent under trees as tree limbs, falling leaves, sap, bird droppings or excess water dripping from the trees can cause damage to the tent fabric and its special coatings resulting in leakage or discolouration.
3. Only remove the tent pegs by pulling on the peg itself. NEVER pull on the tent or the webbing loops to remove pegs as it could result in damage to the tent or personal injury.
4. STORAGE:
NEVER store your tent wet or dirty (even for short periods of time). NEVER store your pegs or poles inside your tent. Always use the separate bags they are supplied in.
5. You may want to insure your tent against loss or damage.

WARRANTY INFORMATION

The warranty period for this tent is found on the packaging and full details are on the Kiwi Camping website - www.kiwicamping.co.nz.

Key points:

The original purchaser of this product is offered a warranty if during this time period the product fails due to a fault in either materials or workmanship. Service under this warranty is available by returning the product, with your proof of purchase, to where it was purchased. If after inspection it is determined that the product is defective, we will repair or replace it (at our discretion) free of charge. This warranty does not cover misuse, damage caused by accident, storm or wind damage, mildew, neglect, UV degradation and fair wear and tear. Please note, the warranty on this tent will be deemed void if the product is used for any purpose other than a temporary shelter. If the claim is not deemed a warranty or is outside its warranty period, we can repair the product at a nominal cost.



Distributed by: Aber, Hamilton, NZ
www.kiwicamping.co.nz

4529-07/17