



Ideal for schools, markets and corporate events, now with the added benefit of high quality corporate branding!

[www.kiwishelters.co.nz](http://www.kiwishelters.co.nz)



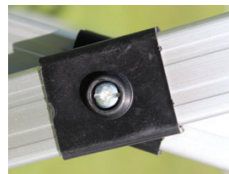
Double layer material for extra protection



Extender peak poles with additional plastic supports to remove rubbing on roof



Two sides 50 W x 55 L (mm) Velcro strips to help secure the roof in place quickly



Molded ABS plastic cross joints for extra strength and easy pitching



ABS plastic bracket designed for added strength



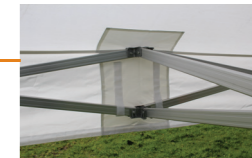
Double layer material for extra protection



All seams are seam sealed to ensure waterproofing



Added tie point for extra stability in windy conditions



Extra Velcro strips to keep roof in place after assembly and double material for extra strength



Three peg points for added stability



Quick pull release pin for ease of use



Waterproof UV protected high quality 450g Polyester

**All models come with the following as standard:**

- Seam sealed
- Fire retardant
- Easy pitch canopy system
- Pull pin locking system on corner fittings and legs for easy adjustment and height versatility
- Complete with guy ropes, pegs and carry bag with wheels

## SPECIFICATIONS

	Market Shelter Range		
Size (m)	3 x 3	3 x 4.5	3 x 6
Packed size (cm)	160 W x 33 H x 28 D	160 W x 37 H x 33 D	160 W x 48 H x 33 D
Weight	40kg	50kg	60kg
Wall/Peak height (m)	Wall: 2.1, Peak: 3.4		
Aluminium frame (mm)	Hexagonal legs: 40 Ø x 1.5 thick, Ribs: 26 W x 13 D x 1.3 thick		
Molded fittings	High Density ABS Plastic		
Roof material	Waterproof UV protected high quality 450g Polyester		
Curtain material	Waterproof UV protected high quality 300g Polyester		
Colours available	Green, Black, White		

**COLOURS AVAILABLE:**

GREEN



BLACK



WHITE



**Sizes:**

3 x 3 / 3 x 4.5 / 3 x 6 (m)





Double layer material for extra protection



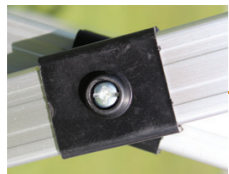
Extender peak poles with additional plastic supports to remove rubbing on roof



Double layer material for extra protection



Two sides 50 W x 55 L (mm) Velcro strips to help secure the roof in place quickly



Molded ABS plastic cross joints for extra strength and easy pitching



Molded cast aluminium bracket designed for added strength



All seams are seam sealed to ensure waterproofing



Added tie point for extra stability in windy conditions



Extra Velcro strips to keep roof in place after assembly and double material for extra strength

**All models come with the following as standard:**

- Seam sealed
- Fire retardant
- Easy pitch canopy system
- Pull pin locking system on corner fittings and legs for easy adjustment and height versatility
- Complete with guy ropes, pegs and carry bag with wheels



Quick cast aluminium pull release pin for ease of use



Waterproof UV protected high quality 450g Polyester



Three peg points for added stability

## SPECIFICATIONS

	Commercial Range	
Size (m)	3 x 3	3 x 6
Packed size (cm)	158 W x 36 H x 32 D	158 W x 57 H x 32 D
Weight	55kg	80kg
Wall/Peak height (m)	Wall: 2.1, Peak: 3.4	
Aluminium frame (mm)	Hexagonal legs: 50 Ø x 2 thick, Ribs: 35 W x 18 D x 2 thick	
Molded fittings	Cast Alloy	
Roof material	Waterproof UV protected high quality 450g Polyester	
Curtain material	Waterproof UV protected high quality 300g Polyester	
Colours available	Green, Black, White	

**COLOURS AVAILABLE:**

GREEN



BLACK



WHITE



**Sizes:**

3 x 3 / 3 x 6 (m)

# BRANDING

## What we can do for you!

- We can print your branding of choice on the roof, roof valance and curtains of your Kiwi Shelter
- The standard print is single colour or 2 colour per printed panel



## BRANDING PROCESS

For more information on pricing and sizing contact us at: [marketing@kiwicamping.co.nz](mailto:marketing@kiwicamping.co.nz)

### WARRANTY:

**Commercial shelter frame:** 7 years

**Market shelter frame:** 5 years

**Roof/curtains:** 2 years (including printed materials)

Kiwi Shelters are distributed by:  
Aber Holdings Ltd. T/A Aber  
17 Mainstreet Place, Te Rapa, Hamilton 3241

Customer service free phone:  
Customer service free fax:  
[sales@aber.co.nz](mailto:sales@aber.co.nz)

0800 161 161  
0800 163 163  
[www.aber.co.nz](http://www.aber.co.nz)